

Mid size meter

Y290M



Meter as a management tool

Class C meter, mechanical sensor plus electronic register, with bidirectional communication by BUS.

Hybrid Technology based on Elster's quality & experience.

- Electronic register rotation.
- 2 colour high contrast LCD with 10mm height digits for easy reading and information icons.
- Provides statistical data about consumption, profiles and pricing.
- Frame data transmission according to LP Bus protocol.
- Self powered by an internal battery, typically 12 years in use.
- Class C (75/33/EEC directive) approved.
- Sizes: DN25, 30 & 40mm.
- ISO lengths & threads.
- For water up to 30°.



Performance data

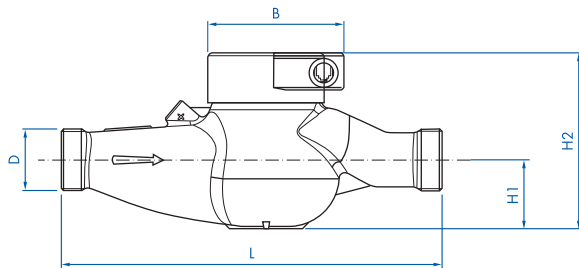
| Size | | | 25 | 30 | 40 |
|-------------------------------|------------------------|-------------------|------|------|------|
| Max. Flow Rate | q _{max} (±2%) | m ³ /h | 7 | 12 | 20 |
| Nominal Flow Rate | q _n (±2%) | m ³ /h | 3,5 | 6 | 10 |
| Transitional Flow Rate | q _t (±2%) | l/h | 52,5 | 90 | 150 |
| Min. Flow Rate | q _{min} (±5%) | l/h | 35 | 60 | 100 |
| Starting Flow Rate | | l/h | 12 | 15 | 25 |
| Press. Loss at Q _n | | bar | 0,25 | 0,25 | 0,25 |
| Working Press | PN | bar | 16 | 16 | 16 |

Output data

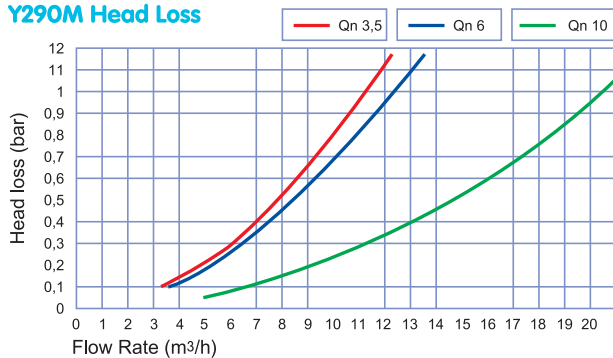
| | | | | |
|--------------------|----------------|---------------|---------------|---------------|
| Display resolution | litre | 0,01 | 0,01 | 0,01 |
| Max. Display | m ³ | 999.999,99999 | 999.999,99999 | 999.999,99999 |

Weights dimensions

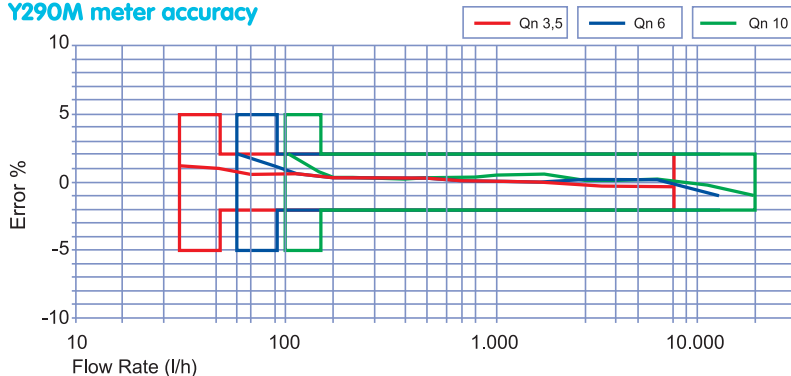
| | | | | | |
|-------------------------|----|------|-------|-------|-----|
| Distance across threads | L | mm | 260 | 260 | 300 |
| Height | H2 | mm | 125 | 125 | 135 |
| Height center line | H1 | mm | 47 | 47 | 58 |
| Width | B | mm | 100 | 100 | 122 |
| Threads | D | inch | 1 1/4 | 1 1/2 | 2 |
| Weight aprox. | | kg | 2,6 | 3 | 4,5 |



Y290M Head Loss

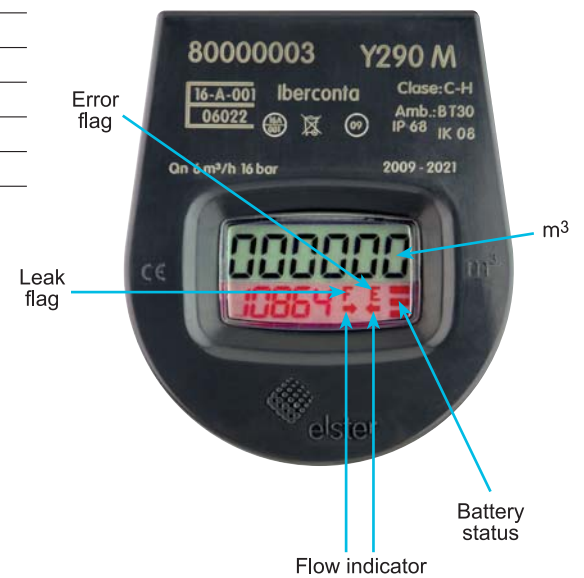


Y290M meter accuracy



WARRANTY:

Meters are warranted for two years from any manufacturing default in his operation and/or materials from the date of delivery. This warranty must be understood as the replacement of the piece or pieces in our workshops. The warranty does not cover damage caused by improper installation, incorrect handling, force majeure, or whether the data provided does not fit the actual conditions of work. By the same, it would be excluded from the security breakdown or failure by the freezing of the fluid is in its interior and the consequent increase in the volume of it. For everything not included in this summary, it must be applied the condition of security, that is available under the terms of Elster.



elster
iberconta

Elster Iberconta, S.A.
C/ Alcalá 95, 6ª Dcha.
Madrid
C.P. 28009
España

Tel.: +34 912 107 230/33
Fax: +34 912 107 231

Elster.iberconta@es.elster.com
www.elster-iberconta.com