

M 200

Electronic Dual Sensor Multi-jet Meter

Air detection – automatic interruption of measuring
in case of air in the pipe



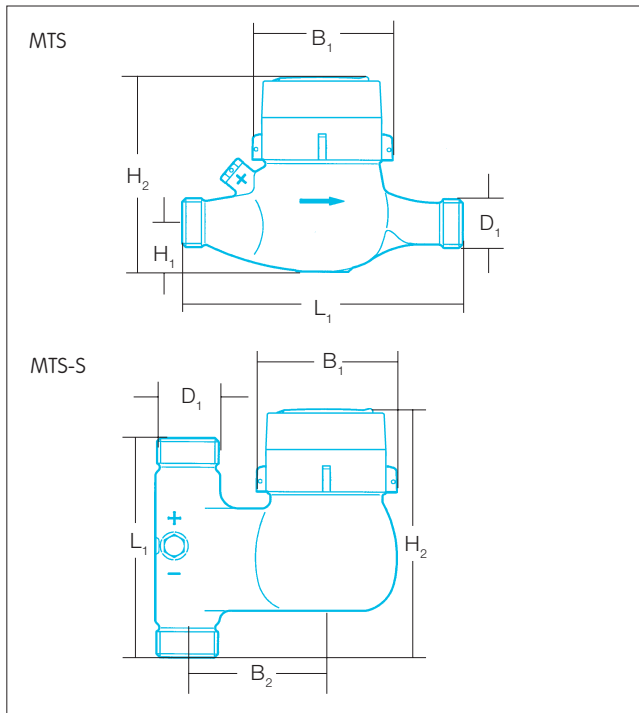
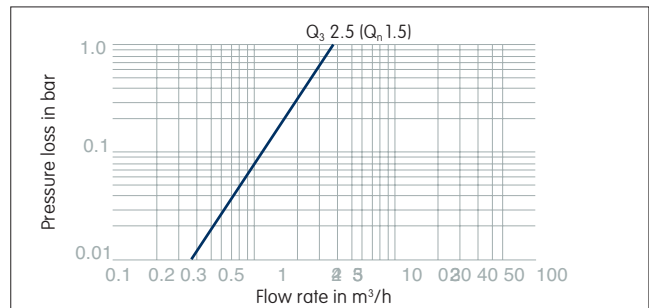
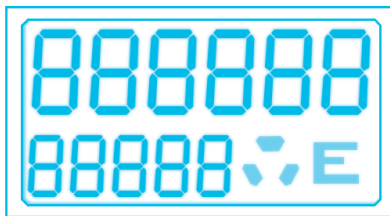
MID approval
in preparation



- Electronic multi-jet meter for cold water
- Permanent flowrate Q_3 2.5 (Q_n 1.5) m³/h
- MID type approval R200 corresponding EEC approval metrological class C·H / B·H
- Universal installation
- Integrated Emeris radio system
- Integrated Air detection with visualisation
- Inductive sensing of rotor speed

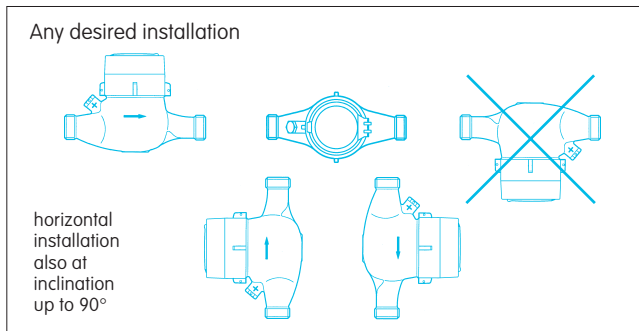


LC-Display



Multi-jet Meter			MTS	MTS-S
Meter size / Permanent flow rate	Q ₃ (Q _n)	m ³ /h	2.5 (1.5)	2.5 (1.5)
Nominal size	DN	mm	20	20
	DN	Inches	3/4	3/4
Ordering number			R	R
Dimensions				
D ₁	Meter connection thread	ISO 228/1	Inches	G 1 B
	Connection thread	ISO 7/1	Inches	R 3/4
L ₁	Meter length		mm	190
	Connector length		mm	50
B ₁	Width		mm	100
B ₂	Distance pipe axis to meter axis		mm	—
H ₁	Centerline height		mm	31
H ₂	Overall height		mm	138
Weight			kg	1.65
Performance characteristics				
Horizontal installation				
Maximum flow rate	Q ₄ (Q _{max})	m ³ /h	3.1	3.1
Transitional flow rate	Q ₂ (Q ₁ [*])	l/h	20	20
Minimum flow rate	Q ₁ (Q _{min} [*])	l/h	12.5	12.5
Starting flow		l/h	3.5	3.5
Measuring range (MID)	Q ₃ /Q ₁		R200	R200
Continuous load	0.8 x Q ₄	Q ₃	l/h	2 500
Temperature	T _{max}	°C	50	50
Pressure rating		PN	bar	16
Flow capacity	at 1 bar pressure loss	m ³ /h	3.6	3.6

* typical performance data; R: on request



Battery life-time	years	10
--------------------------	-------	----

Display	double spaced	
Digits 1st row (m ³)	amount	6
Height	mm	9
Digits 2nd row (decimals)	amount	5
Height	mm	6.5
Flow direction		✓
Alarm display		✓
Air detection		✓

Air detection (optional)

The integral air detection sensor measures permanently whether or not there is air in the upstream installation. If air has been detected – a red LED will be flashing with a set frequency. In this case the registered measurement stops immediately and there will be no further registration of volume-consumption transmitted to the display until water is being detected again in the upstream installation.

Radio data		
Protocol		Wavenis
Technology		FHSS (15 radio channels) (Frequency Hopping Spread Spectrum)
Frequency/transmitting power	MHz/mW	433/10
optional	MHz/mW	868/25
Range	m	up to 600 (depending on local conditions)
Mode of transmission		bi-directional
Connection velocity	kbits/s	up to 9.6
Performance of emission	dBi	8
Reference standard		CE (EN 300-683)
Certification		ART (EN 300-220-1)
Conformity		RTTE 99/5/EC
Backflow alarm		✓
Leakage alarm		✓
Burst pipe alarm		✓
Battery "low level" alarm		✓
Data memory, programmable	data	24
Meter reading, actual		✓
Date and time of day		✓

ELSTER Messtechnik GmbH
 Otto-Hahn-Strasse 25
 68623 Lampertheim, Germany
 T +49 (0) 62 06 933 0
 F +49 (0) 62 06 933 100
 E messtechnik@de.elster.com
 www.elstermesstechnik.com
 M200_D_01.30e / 08.08
 Changes without notice

